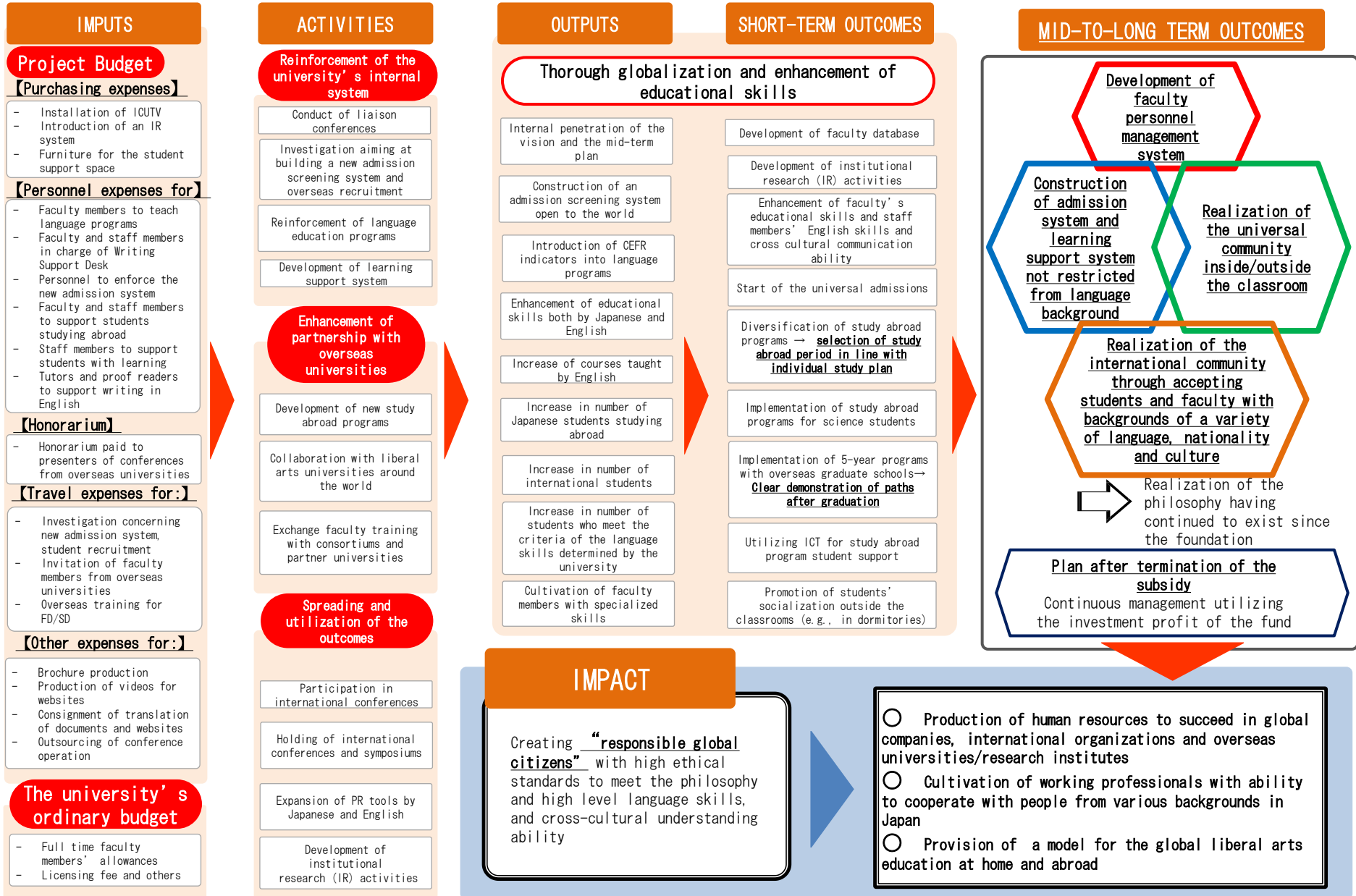


ICU Top Global University Project Logic Model



ACTIVITIES

Reinforcement of the university's internal system

- Conduct of liaison conferences
- Investigation aiming at building a new admission screening system and overseas recruitment
- Reinforcement of language education programs
- Development of learning support system

Enhancement of partnership with overseas universities

- Development of new study abroad programs
- Collaboration with liberal arts universities around the world
- Exchange faculty training with consortiums and partner universities

Spreading and utilization of the outcomes

- Participation in international conferences
- Holding of international conferences and symposiums
- Expansion of PR tools by Japanese and English
- Development of institutional research (IR) activities

OUTPUTS

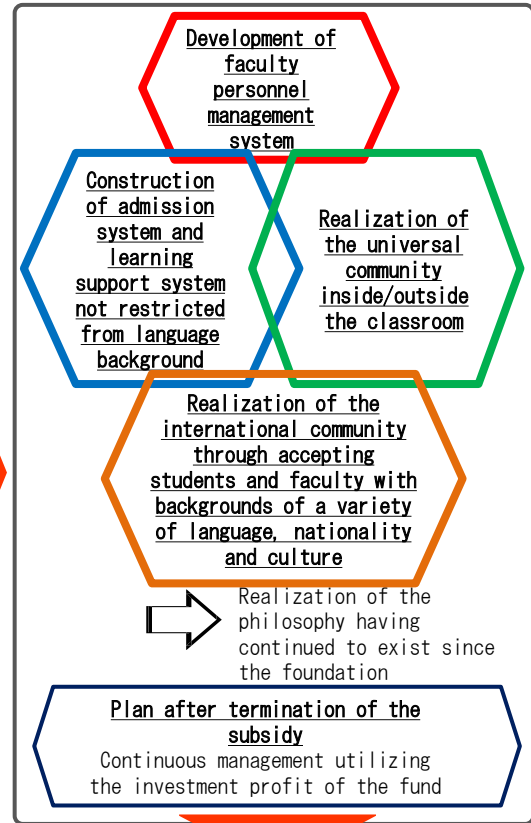
Thorough globalization and enhancement of educational skills

- Internal penetration of the vision and the mid-term plan
- Construction of an admission screening system open to the world
- Introduction of CEFR indicators into language programs
- Enhancement of educational skills both by Japanese and English
- Increase of courses taught by English
- Increase in number of Japanese students studying abroad
- Increase in number of international students
- Increase in number of students who meet the criteria of the language skills determined by the university
- Cultivation of faculty members with specialized skills

SHORT-TERM OUTCOMES

- Development of faculty database
- Development of institutional research (IR) activities
- Enhancement of faculty's educational skills and staff members' English skills and cross cultural communication ability
- Start of the universal admissions
- Diversification of study abroad programs → **selection of study abroad period in line with individual study plan**
- Implementation of study abroad programs for science students
- Implementation of 5-year programs with overseas graduate schools → **Clear demonstration of paths after graduation**
- Utilizing ICT for study abroad program student support
- Promotion of students' socialization outside the classrooms (e.g., in dormitories)

MID-TO-LONG TERM OUTCOMES



IMPACT

Creating **“responsible global citizens”** with high ethical standards to meet the philosophy and high level language skills, and cross-cultural understanding ability

- Production of human resources to succeed in global companies, international organizations and overseas universities/research institutes
- Cultivation of working professionals with ability to cooperate with people from various backgrounds in Japan
- Provision of a model for the global liberal arts education at home and abroad